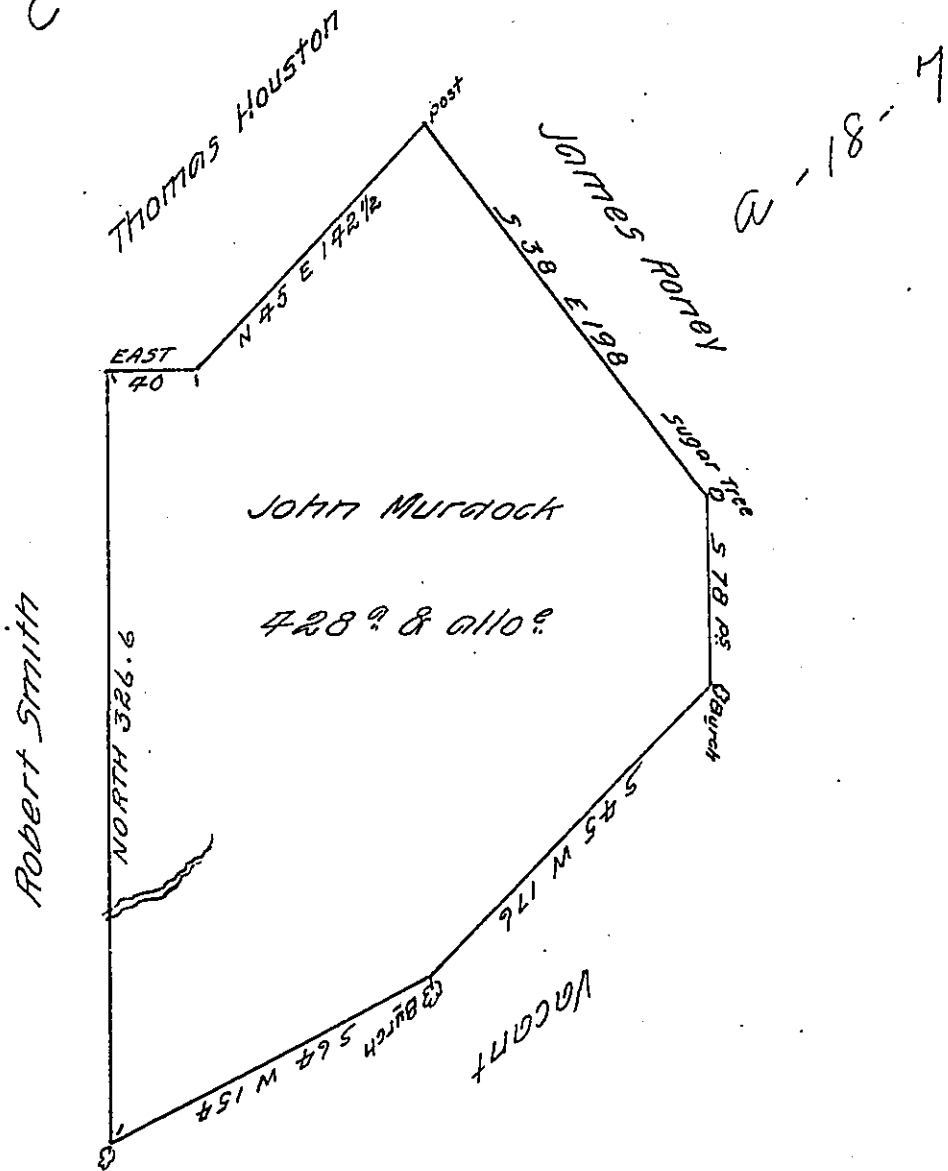


C 75 - 25.5'



A draught of a tract of land situate on the Head Waters of  
 Conemaugh Creek in the County of Bedford containing four hundred and  
 twenty eight acres & the allowance of six P. Cent for roads surveyed for  
 John Murdock the 29<sup>th</sup> day of September 1785 in pursuance of a writ  
 of writ dated July 1<sup>st</sup> 1784.

To John Lukens Esq. S.G.

George Woods D.S.

IN TESTIMONY that the above is a copy of the original remaining on file in  
 the Department of Internal Affairs of Pennsylvania, made  
 conformably to an Act of Assembly approved the 16th day of  
 February, 1833, I have hereunto set my Hand and caused  
 the Seal of said Department to be affixed at Harrisburg,  
 this seventeenth day of November 1905

*George B. Brown*  
 Secretary of Internal Affairs.